



**ZELOSO**  
INDÚSTRIA E COMÉRCIO LTDA

Rod. Regis Bittencourt - Nº 2930 - Km 296,5 - CEP 06888-700  
Potuverá – Itapeccerica da Serra – SP – Brazil  
CGC [Corporate Tax Registration Number]: 61.356.523/0001-60  
Tel.: 11-3694-6000 - Fax: 11-3655-1240  
email: [zeloso@zeloso.com.br](mailto:zeloso@zeloso.com.br) - [www.zeloso.com.br](http://www.zeloso.com.br)

# Guide

## MAT 3006/4/2-RN

MANUFACTURING SERIES:-  
ID SHEET:-

INTERNAL ORDER -

Customer:



**ZELOSO**  
INDÚSTRIA E COMÉRCIO LTDA

Rod. Regis Bittencourt N° 2930 Km 296,5 - CEP 06888-700  
Potuverá – Itapeceira da Serra – SP – Brazil  
CGC [Corporate Tax Registration Number]: 61.356.523/0001-60  
Tel.: 11-3694-6000 - Fax: 11-3655-1240  
email: [zeloso@zeloso.com.br](mailto:zeloso@zeloso.com.br) - [www.zeloso.com.br](http://www.zeloso.com.br)

<b>Summary</b>
----------------

1. Introduction	03
2. General Instruction	04, 05



**ZELOSO**  
INDÚSTRIA E COMÉRCIO LTDA

Rod. Regis Bittencourt N° 2930 Km 296,5 - CEP 06888-700  
Potuverá – Itapeceira da Serra – SP – Brazil  
CGC [Corporate Tax Registration Number]: 61.356.523/0001-60  
Tel.: 11-3694-6000 - Fax: 11-3655-1240  
email: [zeloso@zeloso.com.br](mailto:zeloso@zeloso.com.br) - [www.zeloso.com.br](http://www.zeloso.com.br)

## **1. Introduction**

### **MAT 3006/4/2-RN**

Product built in metal framing channels, laminated tubes and carbon steel cold-drawn bars, special model.

#### **TECHNICAL CHARACTERISTICS**

MAXIMUM DISTRIBUTED LOAD CAPACITY	3,000	kg
HEIGHT COMPLETELY RETRACTED	600	mm
HIDRAULIC COURSE	700	mm
ESTIMATED OWN WEIGHT	190	kg

#### **FINISHING IN PAINTING:**

- ✓ PAINTING IN SYNTHETIC ENAMEL, WITH POLYURETHANE BASE, COLOR SAFETY YELLOW, ZELOSO STANDARDS.



**ZELOSO**  
INDÚSTRIA E COMÉRCIO LTDA

Rod. Regis Bittencourt N° 2930 Km 296,5 - CEP 06888-700  
Potuverá – Itapeceira da Serra – SP – Brazil  
CGC [Corporate Tax Registration Number]: 61.356.523/0001-60  
Tel.: 11-3694-6000 - Fax: 11-3655-1240  
email: [zeloso@zeloso.com.br](mailto:zeloso@zeloso.com.br) - [www.zeloso.com.br](http://www.zeloso.com.br)

## **OPERATION AND SERVICE INSTRUCTIONS OF TRIPOD JACK FOR AVIATION - BRAND “ZELOSO”**

Capacity: **3,000 Kg**

Check oil level. If necessary, add oil to the reservoir, remove the stopper over the reservoir lid and, carefully and cleanly, add oil to the level, i. e., about three quarters of the reservoir height (pistons retracted).

### **Notes:**

Open the discharge valve in the cylinder base, turning it anti-clockwise, pumping about 5 to 10 times. Close the exhaust valve (clockwise); tighten it only with your hands, **DO NO EXAGGERATE**.

Place the jack under the Aircraft supporting point. Lean the adjustment screw head to this point. It is important that the thread course is the smallest possible. Avoid reaching its maximum limit, support the shoes in the floor.

Proceed the pumping with lever. During all pumping procedure, check the jack stability (verticality), if any inclination is noticed, remove the load and restart the process. When an increase in the pumping effort is noticed, check the hydraulic course limit.

When the cylinder remain under the action of load for prolonged time, adjust the relief nut by supporting it to the cylinder. Be careful, the adjustment cannot be done when the piston is reaching the end of its course.

To proceed the exhaust and posterior removal of the jack, pump until relief nut loses and, then, adjust it to the piston superior end. After that, gently open the exhaust valve to obtain a smooth down, without bumping. The piston will retract while under action of the load. Never apply nominal load superior than = **3,000 kg**

### **Service:**

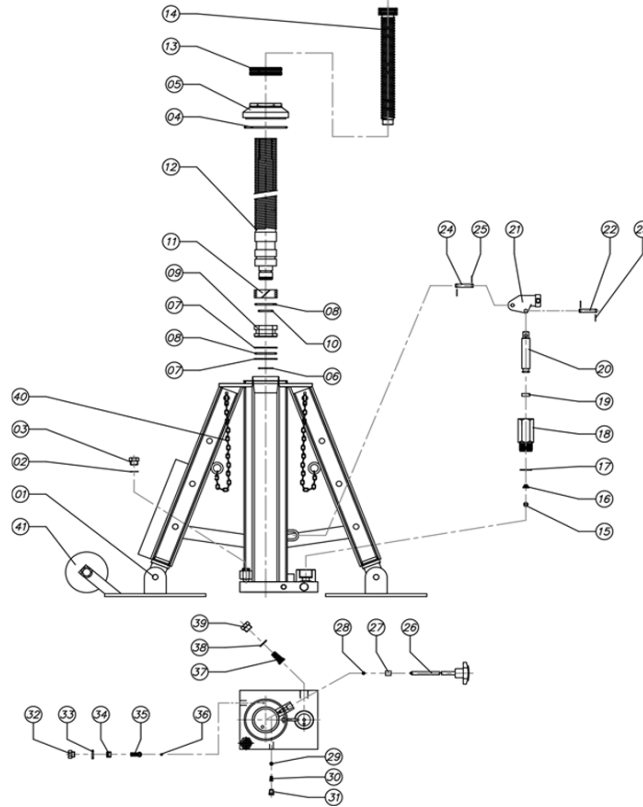
Avoid spilling corrosive material or any kind of sweeping over the assembly, whether in operation or not. The jack must be kept in a clean place, free of dust and away from the sunlight and moisture when not in use. (retract piston and screws).

From time to time, check the oil quality and change it whenever necessary.

Before completing or filling the oil, **FILTER THE HYDRAULIC OIL TO ATTEND CONTAMINATION REQUIREMENTS**.

It is recommended special oil to the hydraulic system (**ISO STANDARDS - VG - 68**).

For example, **SHELL TELLUS 68**.



LIST OF PARTS MAT 3006/4/2—RN

41	NYLON WHEEL R412 - HOLE 01/2"	02	180046
40	LOCKING PIN WITH CHAIN	03	
39	STOPPER	01	110049
38	O-RING	01	020048
37	FILTER WITH SPRING	01	110282
36	SPHERE 05/32"	01	080001
35	SPRING WITH SPHERE SUPPORT	01	230116
34	ADJUSTMENT STOPPER	01	
33	O-RING	01	020045
32	SAFETY VALVE STOPPER	01	110045
31	STOPPER	01	110046
30	RETAINING SPRING	01	230003
29	SPHERE 09/32"	01	080005
28	SPHERE 01/4"	01	080004
27	SMALL TUBE F—6	01	450003
26	COMPLETE SHUT-OFF COCK	01	MA000114000000
25	ELASTIC RING	02	010003
24	PIN 05/16"	01	
23	ELASTIC RING	02	010002
22	PIN 01/4"	01	
21	MEDIUM ARM	01	460028
20	SMALL PISTON 03/4"	01	
19	MOLYTHANE	01	020292
18	SMALL CYLINDER	01	
17	ALUMINIUM GASKET	01	100175
16	INLET SPRING	01	230009
15	SPHERE 03/8"	01	080007
14	ADJUSTMENT FUSE	01	
13	SUPPORTING NUT	01	
12	THREADED PISTON	01	
11	PISTON GUIDE	01	
10	O-RING	01	020113
09	PLUNGER	01	
08	O-RING	02	020187
07	ZELASTIC	02	ZE0065
06	ELASTIC RING	01	010028
05	CYLINDER NUT	01	
04	O-RING	01	020138
03	STOPPER	01	110044
02	COPPER WASHER	01	030090
01	COMPLETE SHOE PIN	03	
POSITION	DESCRIPTION	QTY	CODE
Note.:			
MAT 3006   RECOMMENDED OIL		QTY	1.4 L
ISO VG 68			